

**The Brooklyner**

111 Lawrence Street

Downtown Brooklyn

**718-246-0111**

[www.thebrooklyner.com](http://www.thebrooklyner.com)

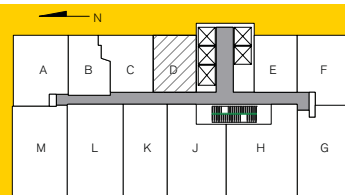
[rent@thebrooklyner.com](mailto:rent@thebrooklyner.com)



A CLARETT GROUP DEVELOPMENT

 Equity Residential

**STUDIO**  
1 BATH  
469 SQ. FT.



**5-50D**

All dimensions are approximate and subject to construction variances. Plans and dimensions may contain minor variations from floor to floor.

